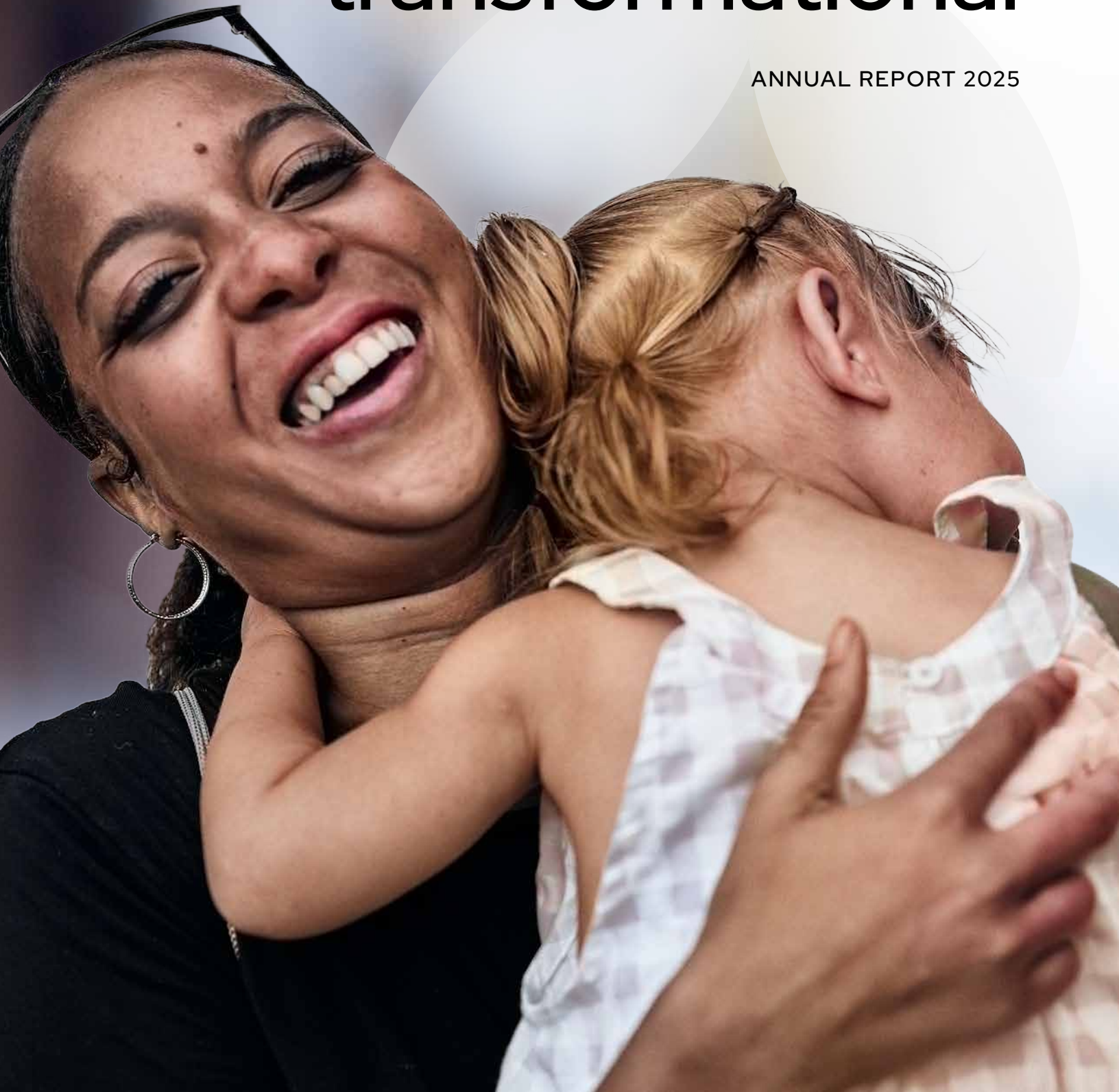




belonging is transformational

ANNUAL REPORT 2025



EXECUTIVE LEADERSHIP

President & CEO

Angie Zaegel Hannon

Chief Finance Officer

Mark Hamilton

Chief Operations Officer

Frank Flosman

Chief Information Officer

Kim Harris

Chief Human Resources Officer

Bruce Hamilton

Chief Medical Officer

(Retiring end of 2025)

Dr. Sharon Singleton

Chief Medical Officer

(Incoming 2026)

Dr. Amy Dawson

Chief Dental Officer

Dr. Tyler Kimmel



BOARD OF DIRECTORS

Chair – Heidi Fowler

1st Vice Chair – Ben Eisbart

2nd Vice Chair – Katherine LaPierre

Treasurer – Raylene Rospond

Secretary – Aaron Robles

Members at Large:

Marcella Jackson

Pamela Messman

Gary Griffin

Dr. Wayne Walker, DDS

Melissa Bradberry

Brooke Southivong

Cynthia Villanueva

Dr. Brian Zehr

Nyein Chan

A WORD FROM THE CEO



For more than 55 years, Neighborhood Health has been rooted in service. Yet even after decades of commitment, 2025 became one of the most transformational years in our history.

This year, we celebrated our first completed capital campaign with the opening of the Neighborhood Health Oxford Project in June 2025. What began as vision and perseverance became a fully reimagined, state-of-the-art health and wellness facility in the heart of Southeast Fort Wayne.

We hosted our first fundraising gala, the Mystical Masquerade – an evening that not only raised critical support for perinatal care but launched a new tradition of community generosity.

We expanded leadership by establishing the role of Chief Information Officer, ensuring that innovation, technology, and data infrastructure keep pace with the growing needs of our patients.

With the opening of our Oxford clinic, Neighborhood Health introduced its first-ever Community Room, intentionally designed to move healthcare beyond exam rooms and into education, prevention, and connection.

Each of these “firsts” represents more than growth. They represent transformation.

Transformation means expanding access while deepening trust.

It means building systems that reduce fear.

It means designing care environments that say to every patient: You belong here.

This year proved that belonging is not abstract. It is architectural. It is operational. It is relational. And it is powerful.

As we take a look back, we are incredibly grateful for those who have stood with us – patients, community members, donors, board members, staff members, and other stakeholders. We couldn’t have done any of this without you.

Thank you for your investment in transformational healthcare for all.

Angie Hannon

Angie Zaegel Hannon
Chief Executive Officer, Neighborhood Health





WESLEY'S STORY

WHY BELONGING MATTERS IN HEALTHCARE



For Wesley and his family, dental visits were not simple appointments. They were emotional decisions.

Wesley lives with autism. His family struggled to find providers willing – and prepared – to care for patients with complex sensory and behavioral needs. As shared in his testimony.

Many offices simply did not want to “deal with” patients with autism. But at Neighborhood Health, something was different.

Patience replaced pressure.

Understanding replaced judgment.

Familiarity replaced fear.

Small gestures mattered. A blanket placed behind his back during a crown prep when he was uncomfortable. Clear explanations of insurance coverage. Gentle voices. Time.

For Wesley, dental care became more than treatment. It became trust.

For his family, it became relief – knowing there was finally a place that saw him not as a complication, but as a person.

Belonging in healthcare means designing care around the patient – not asking the patient to adapt to the system.

Wesley's experience is not the exception. It is the model.



“If it wasn't for you guys, I don't know where we would go.”

66

Watch Wesley's Story



PHARMACY SPOTLIGHT

WHY BELONGING MATTERS IN HEALTHCARE

In June of 2023, Martin Trigg's life changed almost overnight. Within 30 days, he suffered three strokes. He had no insurance, was unable to work, and suddenly found himself navigating a complex healthcare system while trying to rebuild his life and health. It was during a hospital stay that he was referred to Neighborhood Health, a decision he says changed everything.

At first, Martin just needed a primary care provider and help managing his medications. What he found was something more personal. "When she called me and asked how I was doing, that lets you know that you're not by yourself," Martin said. "That's something you can move forward with."

Over the next two years, Martin built relationships with his care team, pharmacy staff, and support staff who helped him navigate insurance lapses, medication costs, and recovery after his strokes. Having an on-site pharmacy made a major difference. "I went from paying \$100 or \$200 for prescriptions to about

\$50," he said. "My bills can get paid now without me having to worry about lagging on one of my prescriptions."

Today, Martin continues working to rebuild his health. With the help of his care team, he has lowered his A1C, lost nearly 90 pounds, and is focused on maintaining his health so he can continue working and living independently.

What stands out most to Martin is the sense of belonging he feels when he walks through the doors. "If I say it's like the show Cheers, does that make sense? Everybody knows your name."

In my situation, before, during, and after, Neighborhood Health is right for me."



Watch Martin's Story

"When she called me and asked how I was doing, that lets you know that you're not by yourself. That's something you can move forward with."



A HISTORIC YEAR | OXFORD OPENS WHEN VISION **BECAME VISIBLE**



For years, the former Ward Elementary School building stood vacant and in need of someone or something to breathe life into it. For the neighborhood, this was more than an abandoned school - it was a symbol of history and hope. It was a place that held fond memories and meaningful connections.

In 2020, the neighborhood rallied to keep the building from being demolished, and in 2021 Neighborhood Health was given the opportunity to revitalize the space into a new purpose and lifeline for the community. This was the beginning of a true partnership to revitalize this space to be a center for health and healing.



A HISTORIC YEAR | OXFORD OPENS BUILT WITH INTENTION



Every decision behind Oxford was guided by a few questions:

How can we come alongside our community for integrative care?

How can we remove barriers and improve accessibility?

How can we treat the whole person and not just the diagnosis?

What emerged is more than a renovated building. It is a place where individuals and families can access coordinated, whole-person care in one connected space that include:

- Family Medicine
- Pediatrics
- Prenatal Care
- Behavioral Health
- Dental Services
- Chiropractic Care
- On-site Pharmacy
- Nutrition Education
- Healthcare Education
- Community Room space

Patients can now schedule coordinated appointments in a single location – medical, dental, pharmacy – sometimes in the same visit. That integration reduces transportation barriers, time away from work, and fragmented care.

Oxford was designed not just to treat illness, but to prevent it.

By embedding behavioral health within primary care.

By locating pharmacy services on-site.

By expanding prenatal access in a ZIP code with elevated infant mortality rates.

This is care that meets people where they are both geographically and emotionally.

The Neighborhood Health Oxford Project transformed that long-vacant space into something entirely new; a vibrant, integrated health and wellness campus designed intentionally for one of the city's highest-need communities.

But Oxford was never just about renovation.

It was about restoration.

Restoring access to consistent, affordable healthcare.

Restoring dignity to families navigating complex systems.

Restoring investment into a neighborhood that deserved permanence, not temporary solutions.



A HISTORIC YEAR | OXFORD OPENS A CAPITAL CAMPAIGN **FULFILLED**



Watch the Ribbon Cutting Video here!



Oxford represents the culmination of Neighborhood Health's first capital campaign, a vision that began in 2020, one of the most uncertain years in modern healthcare history. In the midst of navigating our first global pandemic, while systems were strained and the future felt unpredictable, leadership chose not to pause long-term vision. Instead, we leaned into it. Even during crisis, we believed expansion in Southeast Fort Wayne was not optional. It was essential.

What began during a season of uncertainty required years of planning, strategic partnerships, and unwavering perseverance. That commitment came to fruition in June 2025.

Local, state, and federal investments aligned to make what once felt aspirational tangible, including New Markets Tax Credit allocations from four Nationally recognized Community Development Entities, support from the City of Fort Wayne, and critical public and private partnerships that believed in this project's long-term impact.

Ribbon cutting day was more than ceremonial. It marked the transition from blueprint to lived experience. From architectural renderings to exam rooms filled with patients. From vision statements to operational reality.

Leaders, funders, staff, and neighbors gathered not simply to open doors, but to celebrate permanence.

The Oxford Project signaled something powerful.

Neighborhood Health is not passing through this community. We are planting roots.

Even during crisis, we believed expansion in Southeast Fort Wayne was not optional. It was essential.



A HISTORIC YEAR | OXFORD OPENS

ECONOMIC IMPACT WITH HUMAN MEANING

Oxford is projected to create 55 permanent jobs by the end of its first year and generate significant economic circulation in the local economy. But this impact is not only about job numbers, it is about opportunity.

For a quadrant of the city that has historically been under resourced, Oxford brought more than services. It brought higher-paying professional and clinical careers, long-term stability, and advancement pathways into healthcare, administration, operations, and pharmacy. These are not temporary positions. They are sustainable roles that strengthen households and create upward mobility within the very community being served.

The Oxford Project also represents a \$20 million investment directly into Southeast Fort Wayne. That level of capital infusion signals permanence. It signals confidence. It signals belief in the future of this neighborhood.

Research consistently shows that health centers generate nearly six dollars in economic impact for

every dollar invested. That multiplier effect extends beyond the clinic walls into local vendors, housing stability, retail activity, and workforce participation.

But the impact goes even deeper than economics.

When a parent can receive care close to home, they miss fewer hours of work.

When chronic conditions are managed early, emergency room dependence declines.

When mental health services are embedded into primary care, stigma decreases and outcomes improve.

Oxford strengthens individual stability and community vitality at the same time.

Health is infrastructure.

Workforce participation depends on it.

Neighborhood revitalization depends on it.



CARE THAT REDUCES FEAR | COMFORT NEEDS DENTISTRY WHEN BELONGING STARTS WITH SAFETY

At Neighborhood Health, we understand that for many patients, dentistry is not neutral. It is emotional.

Fear.

Past trauma.

Sensory overload.

Mobility challenges.

For some, simply walking into a dental office can raise heart rates before a procedure even begins.

Our Comfort Needs Dentistry program began as a response to those realities. At our Calhoun location, we started integrating sensory supports and patient-centered adjustments that transformed the dental experience for individuals with autism, anxiety disorders, trauma histories, and complex medical needs.

We were trained in best practices.

We learned what worked.

We listened to families.

We adapted.

When we built the Oxford site, we were able to take everything we had learned and design it intentionally from the ground up.

At Oxford, belonging begins the moment a patient walks through the door; patients check in to a welcoming waiting area that includes a dedicated sensory room. This quiet space features dim lighting, calming seating, and room for regulation before appointments begin. It provides privacy and dignity for patients who need a moment to settle before care.



Inside treatment rooms, the experience continues:

- Adjustable colored lighting to reduce overstimulation
- Bubble towers that create calming visual focus
- Weighted blankets for grounding comfort
- Noise-canceling headphones
- Gentle pacing of procedures with clear communication



For patients with mobility challenges, Oxford also includes a wheelchair lift that allows individuals to remain in their own mobility devices during treatment. This improves safety, preserves dignity, and eliminates the physical strain and anxiety of transferring into a traditional dental chair.

This is not luxury. It is accessibility.

Dr. Kimmel reflects, "We are able to provide a comfortable visit from beginning to end so patients feel safe while we're actually conducting the procedure."

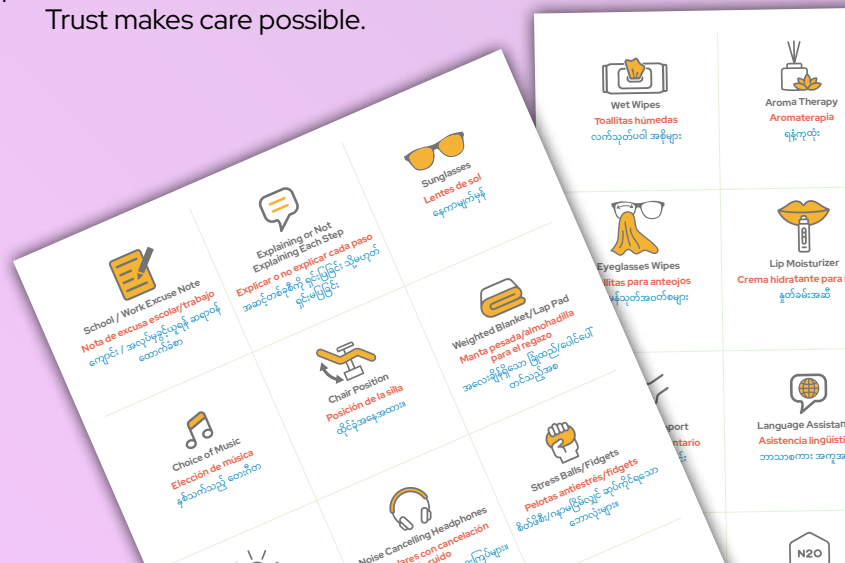
Safety reduces fear.

Reduced fear builds trust.

Trust makes care possible.



Watch Now:
Making Dental Visits More Comfortable for Everyone



RECOGNITION FOR THIS WORK INCLUDES



IDA Charles W. Gish Community Dental Health Award

Angie Zaegel

This award recognizes Indiana citizens who have demonstrated

outstanding leadership and involvement leading to significant improvement and/or positive impact in the overall dental health within a given community.



IPHCA Exemplary Program Award for Comfort Dentistry

This award honors a notable project by a member organization that has demonstrated

excellence through: 1) advocacy; 2) innovative programs/services/systems that have increased access, improved health care services to the community, or decreased disparities; or 3) collaborative efforts to reach high-risk populations in the community.



COMMUNITY EVENTS WE LED

CREATING MOMENTS THAT MATTER

Healthcare is more than appointments and outcomes. It is presence. It is visibility. It is joy.

Throughout the year, Neighborhood Health hosted events that strengthened connection and reminded families that their healthcare home is also part of their community life.

These gatherings were designed to meet people where they are, remove barriers to engagement, and create positive, lasting memories.

Each event served a different purpose, but all shared the same intention. Strengthening connection. Building familiarity. Creating welcoming spaces.

2025 Neighborhood Health Hosted Events

- Community Block Party during National Health Center Week
- Dose of Breakfast with the Docs
- Santa and Sprinkles Holiday Event
- Take Your Girl to Work Day
- Trunk or Treat at Broadway
- Breast Cancer Awareness Event led by staff
- Community Room wellness classes and open houses
- HEAL Cooking Kitchen nutrition demonstrations



Community Block Party

During National Health Center Week, we opened the doors of our new Oxford facility for a Community Block Party that welcomed more than 150 visitors.

Families toured the new space, met providers and staff, and experienced firsthand what integrated care looks like. The event featured community partner vendors, food, giveaways, children's activities, and music. It transformed a healthcare facility into a celebration space.

For many attendees, this was their first time walking through the building. Instead of entering as patients, they entered as neighbors.

The block party allowed families to see the exam rooms, visit the Community Room, and meet the team in a relaxed setting. It turned curiosity into comfort and introduced Oxford not just as a clinic, but as a trusted presence in the neighborhood.



Santa and Sprinkles

Santa and Sprinkles was our first ever holiday event of its kind, and it quickly became a favorite.

Families arrived dressed in matching pajamas, children decorated cookies, and laughter filled the room. Parents were able to take photos and enjoy a personal meet and greet with Santa in a warm and welcoming setting.

For many families, especially those navigating financial challenges, events like this provide meaningful moments that might otherwise feel out of reach. It was not just about cookies or pictures. It was about creating joyful, shared experiences that strengthen family bonds.

Healthcare environments are often associated with stress. Santa and Sprinkles reminded families that their healthcare home can also be a place of celebration.

COMMUNITY PARTNER EVENTS & PROGRAMS

BELONGING BUILT TOGETHER

Belonging is not built alone.

Neighborhood Health's impact expands when we collaborate with trusted community partners who share our commitment to access, education, and whole person wellness. These partnerships allow us to extend care beyond appointments and into everyday life.

Through shared programming, we create spaces where prevention, healing, and connection grow side by side.



Cancer Services

In partnership with Cancer Services of Northeast Indiana, we hosted:

- Tai Chi
- Chair Yoga
- Educational wellness programming

These sessions supported individuals navigating cancer treatment and survivorship through gentle movement, stress reduction, and practical wellness education. By offering programs onsite, we reduced barriers and reinforced that supportive care is part of whole person health.



A Norman Perspective

Through Flash Talks for youth and parents, A Norman Perspective facilitated conversations on leadership, accountability, emotional intelligence, and family communication.

These sessions encouraged growth, reflection, and stronger foundations at home. By hosting these programs, we affirmed that healthcare includes mental and emotional well being.



ADVOCACY & VOICE

BELONGING REQUIRES A SEAT AT THE TABLE



Belonging in healthcare does not stop at clinic doors. It extends into policy rooms, legislative chambers, and conversations that shape how care is funded, delivered, and protected.

As a Federally Qualified Health Center, Neighborhood Health serves patients whose

voices are not always represented in policy decisions. That responsibility requires more than service delivery. It requires advocacy.

Community health centers have long been recognized as one of the most bipartisan areas of healthcare policy. Access to primary care, preventive services, and integrated support strengthens families, stabilizes communities, and reduces long term system costs. Regardless of political affiliation, the value of community based healthcare remains clear.

Because of that, we advocate across the aisle. We engage with leaders from both parties and across administrations. Our commitment is not to politics. It is to patients.

In February 2025, we traveled to Washington, DC for Healthcare on the Hill. There, we met with federal representatives to elevate the importance of sustained funding for Federally Qualified Health Centers, workforce pipeline development, and policies that protect access for vulnerable populations.

Our advocacy efforts do not end with travel. We have welcomed legislators onsite to tour our facilities, meet staff, and speak directly with leadership about the challenges and opportunities we face. When policymakers walk our halls, see our Community Room in action, and meet the patients and providers we serve, understanding deepens.

Policy decisions impact reimbursement, staffing, expansion, and the ability to keep services affordable. By maintaining strong relationships at the Statehouse, on Capitol Hill, and locally, we ensure that Neighborhood Health remains engaged, informed, and proactive.

Advocacy is not separate from care. It is part of protecting it.

Belonging requires presence.

Belonging requires participation.

Belonging requires a seat at the table.



MYSTICAL MASQUERADE FUNDRAISING EVENT

A NIGHT THAT CHANGED WHAT WAS POSSIBLE

For more than 55 years, Neighborhood Health has focused on delivering care. In 2025, we added a new chapter to that legacy.

The Mystical Masquerade marked our first formal fundraising gala. It was a night designed not only to celebrate our mission, but to invite the community into it in a new and meaningful way. The evening embraced a theme of mystery and wonder. Guests arrived in elegant attire and festive masks, stepping into an immersive experience that blended celebration with purpose.

The event featured:

- Mystical themed décor and interactive games
- A shared dinner experience
- Live and silent auction opportunities
- Storytelling that brought patient impact to life

But beyond the atmosphere, the night represented something deeper.

It was a series of firsts.

Neighborhood Health is entering a new season of sustainability, visibility, and community partnership.

A single night.

Wonder and awe.

Lasting transformation.

For the first time in our history, Neighborhood Health hosted a gala of this scale and vision. For the first time, we rallied corporate sponsors, community leaders, and individual supporters into a single evening centered on expanding access to care.

Most importantly, the event raised critical funds to support perinatal care services, strengthening our ability to care for mothers and infants in communities facing significant health disparities.

The impact was amplified through matching support from the Lutheran Foundation, multiplying generosity and expanding the reach of every gift.



Total Raised
\$35,748.31

Number
of Sponsors
19

Guests
157

AWARDS & RECOGNITION

CELEBRATING EXCELLENCE

Belonging Is Built Together

Neighborhood Health does not stand alone. Every patient served, every expansion completed, and every life impacted is made possible through the strength of our stakeholders.

Donors, foundations, corporate partners, public agencies, volunteers, and advocates each play a vital role in advancing access to quality, compassionate healthcare. Your investment strengthens stability for families, expands opportunity in underserved neighborhoods, and ensures that care remains accessible regardless of ability to pay.


When you give, advocate, partner, or serve, you become part of the story.

CELEBRATING EXCELLENCE

- ARCH 2025 ARCHIE Award
- Leonard G. Murphy Award – Neighborhood Health Oxford
- IPHCA Awards
- Volunteer of the Year – Aaron Robles
- Provider of the Year – Dick Donovan
- CareSource Hoosier Heartbeat Award – Dr. Kimmel
- WIC – Premier USDA Breastfeeding Award of Excellence
- Reader's Choice
- Best Mental Health Provider (Runner-Up) – Pam Thorton



”

×  Mary
Local Guide • 16 reviews

★★★★★ 1 month ago

I've been going there for years! Very pleased and wouldn't choose anyplace else. They really listen to your concerns. My health has greatly improved since I started going. Any questions are answered. The entire staff is positive and makes sure any health issues are addressed immediately!

“



CareSource Hoosier
Heartbeat Award



IPHCA Awards



ARCH 2025
ARCHIE Award

AWARDS & RECOGNITION

OXFORD PROJECT SUPPORTERS

The Oxford Project represents a transformational milestone for Neighborhood Health. This \$20 million investment in Southeast Fort Wayne became possible through the vision and generosity of partners who believed in long term community impact.

We extend special recognition to the following supporters of the Oxford Project:

HERO

- City of Fort Wayne Legacy Funds
- Allen County Fort Wayne Capital Improvement Board of Managers
- The James Foundation
- WindSwell Foundation
- Anonymous

FRIEND

- Ben and Sharon Eisbart
- Phil Henry
- Jeanne Lewis
- O'Rourke Schof Family Foundation
- Olive B. Cole Foundation
- Tim and Libby Ash

ALLY

- English Bonter Mitchell Foundation
- Delta Dental Foundation

NEIGHBOR

- Todd and Janet Stephenson
- David and Barbara Christianson
- Billy and Melissa Bradberry
- Richard McCampbell
- Thomas Skillman and Barbara Wachtman
- The Happy Way Foundation
- F&M Bank
- Indiana Dental Association Foundation for Dental Health
- Caldwell Family

ADVOCATE

- Community Foundation of Greater Fort Wayne
- Do it Best Foundation
- City of Fort Wayne
- McMillen Foundation

AGENT OF CHANGE

- Isaac Knapp Dental Education Foundation
- The Journal Gazette Foundation
- St. Joseph Community Health Foundation
- Dr. Matthew and Janel Sprunger

NEW MARKET TAX CREDIT PARTNERS

- Fort Wayne New Markets Revitalization Fund, LLC
- TruFund Financial Services
- CCG Community Partners, LLC
- Dudley Ventures

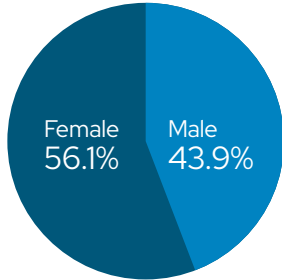
Your partnership turned vision into reality. Oxford stands today because you believed it could.





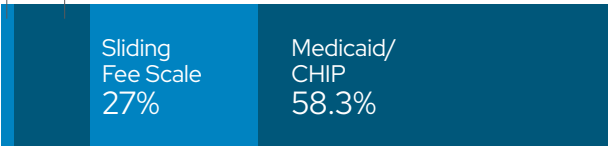
BY THE NUMBERS

GENDER BREAKDOWN



Medicare
1.9%

Private
12.8%



PAYMENT TYPE



25,366
total patients

MEDICAL



17,874 | **52,555**
patients | visits

PHARMACY GROWTH & PATIENT IMPACT



2,200

PATIENTS SERVED

Pharmacy patient volume increased from ~1,375 patients in January to 2,200 patients served.

DENTAL



10,158 | **22,410**
patients | visits

BEHAVIORAL HEALTH



1,078 | **4,782**
patients | visits



5

PHARMACISTS

Expanded clinical capacity from 2 to 5 full-time pharmacists, including 1 clinical pharmacist to meet rising patient needs.



5

PHARMACY TECHNICIANS

Operational support grew from 2 to 5 technicians, improving service efficiency and access.



577

PATIENTS IN CLINICAL PHARMACY CARE

Patients received pharmacist-led support for chronic disease management and medication optimization.



48%

GROWTH IN CLINICAL SERVICES

Clinical pharmacy patient visits increased from 390 patients last year to 577 this year.

OPTOMETRY



643 | **851**
patients | visits

CHIROPRACTIC



463 | **851**
patients | visits

A LEADERSHIP TRANSITION | GROUNDED IN TRUST WHERE BELONGING LEADS US NEXT

For eight years, Dr. Sharon Singleton has helped guide Neighborhood Health through seasons of growth, challenge, and transformation. Her steady leadership strengthened clinical quality, advanced integrated care, and deepened collaboration across disciplines.

Under Dr. Singleton's direction, Neighborhood Health continued expanding access while reinforcing a culture of compassion and accountability. She championed patient-centered care, supported providers through changing healthcare landscapes, and maintained a clear commitment to serving those facing barriers to access.

Her impact will continue long after her final day as Chief Medical Officer at the end of 2025. We are grateful for her dedication, wisdom, and years of service to our patients and providers.

Leadership transitions are significant. At Neighborhood Health, they are also intentional.



Welcoming Dr. Amy Dawson
Building on Strength. Leading
Forward.

As we prepare for 2026, we
are proud to welcome Dr. Amy
Dawson as Neighborhood Health's
next Chief Medical Officer.

Dr. Dawson brings more than two decades of clinical experience and leadership within Federally Qualified Health Centers. Her background includes direct patient care, medical direction, and mentoring physicians dedicated to serving communities facing systemic barriers to care.

She is known for thoughtful clinical leadership, collaborative team building, and a deep belief that healthcare must be both accessible and relational.

Dr. Dawson understands that quality care extends beyond exam rooms. It requires systems that support providers, strengthen care coordination, and improve outcomes for families navigating complex medical and social challenges.

Her priorities as Chief Medical Officer will include:

- Strengthening clinical consistency across all locations
- Expanding quality improvement initiatives
- Supporting provider recruitment and retention
- Deepening integrated care across medical, behavioral health, dental, and pharmacy services
- Advancing preventive strategies that address maternal health, chronic disease, and health disparities

Dr. Dawson steps into this role at a pivotal time. With the Oxford expansion complete, integrated services growing, and community partnerships deepening, Neighborhood Health is positioned for its next chapter of impact.

The work ahead requires both stability and vision.

In 2026, we will continue expanding access without losing connection. We will strengthen systems while protecting the humanity of care. We will grow intentionally, guided by leaders who understand both mission and medicine.

This transition represents continuity, not disruption.

It is a passing of responsibility rooted in shared purpose.

Because at Neighborhood Health, belonging is not dependent on one person. It is sustained by a team committed to serving with excellence.

The future of care is already taking shape.

And we are ready.



belonging is
transformational



Neighborhood Health is governed by a Board of Directors who either work or live in the neighborhood, are current patients, or work for other businesses in the community. This group of people set the policies that govern Neighborhood Health.

This program is supported by the Health Resources and Services Administration (HRSA) of the U.S. Department of Health and Human Services (HHS) as part of an award totaling \$3,480,978 with 65% financed by non-governmental sources. The contents are those of the author(s) and do not necessarily represent the official views of, nor an endorsement, by HRSA, HHS or the U.S. Government.

For Patient Rights & Responsibilities, visit mynhfw.org. 260-458-2641

